

*brilliance in solar lighting*

# photinus

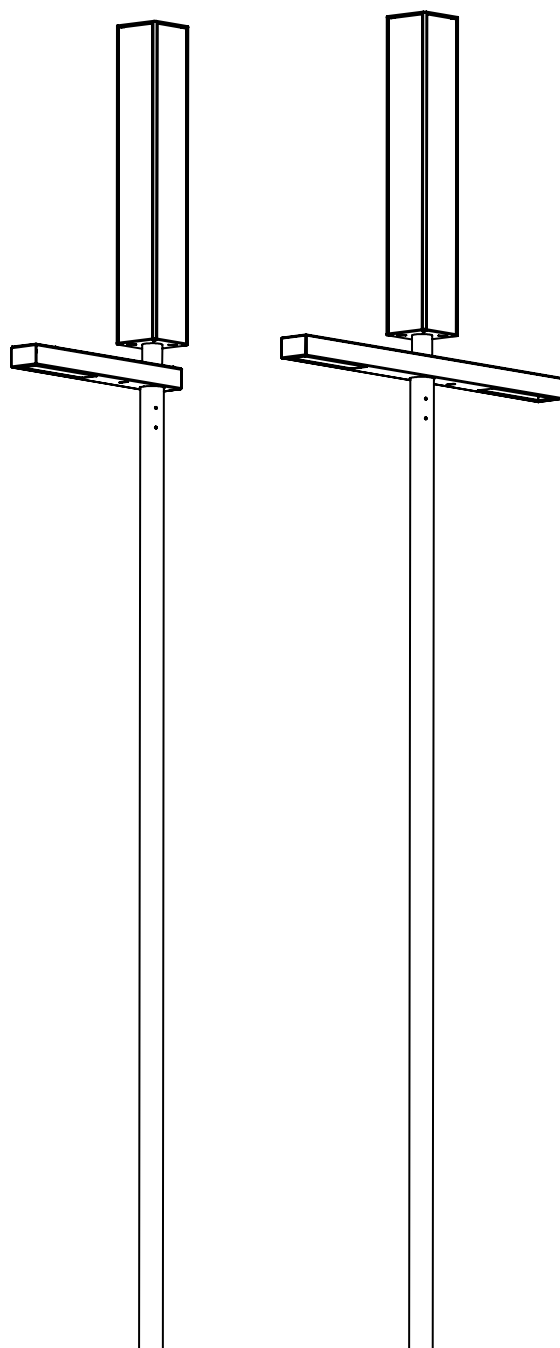
---

**DATASHEET V1 | 2019**

---

**aron / aron duo**

---



# 1

## aron

### SELF-SUFFICIENT SOLAR LED STREET LAMP

#### USE

The aron is available to ensure a secure supply even in critical weather regions. The aron solar light is a solar-powered LED street lamp for car parks with two light sources which are used where there is no electricity supply or where it would not be economically feasible to implement one. The aron can be used anywhere where a secure supply and excellent light quality is of paramount importance even in dim conditions. Due to the cubic aluminium construction with 4 photinus high performance photovoltaic modules, sufficient energy can be generated in a targeted manner via the diffuse light component especially in regions with poor weather (snow, fog, etc.). The vertically arranged modules prevent snow from accumulating on it in winter. A sophisticated energy management system guarantees secure functionality over several nights even in poor weather conditions.

#### FUNCTION

The integrated battery is charged during daytime by the efficient photovoltaic solar module. At nightfall, the LED light module is automatically activated.

The light output of a solar lamp is defined by the incident solar irradiation at the respective location, which is why the quality of the individual components and their optimum interaction play a decisive role.

The LiFePo4 battery used in his solar light is shored in the ground together with the post so that an optimum, constant temperature is achieved. The long service life of the battery and efficient theft protection are the results.

#### GUARANTEE

5 years

The warranty of the solar illumination is provided, as fas as the illumination is installed like described in the installation instruction. The warranty is void, if the product settings haven ´t been changed by photinus authorized employees/partners and/or using non-photinus approved tools.

# 2

## TECHNICAL DATA

### SOLAR MODULES

<b>Solar modules</b>	Monocrystalline silicon cells with exceptional efficiency specially processed by photinus
<b>Efficiency</b>	20%
<b>Max. performance of the energy column Pmpp</b>	140 Wp / 4 solar modules, they are also charged up in cloudy conditions

### BATTERY (IN THE POLE)

<b>Battery</b>	LiFePO4 / 461Wh (12.8V 36Ah)
<b>Operating temperature</b>	-20°C to +60°C
<b>Battery life</b>	up to 10 years
<b>Protection class</b>	IPX8

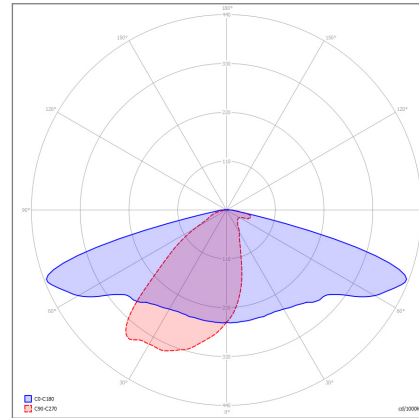
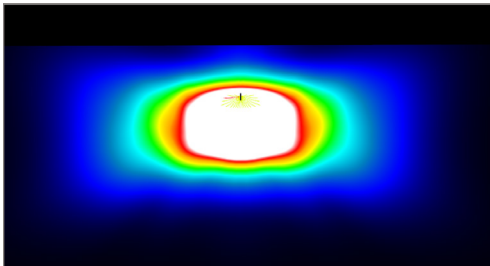
### LIGHTS

<b>Max. luminous flux</b>	8000 lm (Bregenz site / 47 degrees latitude / 1400 lm / V5)
<b>Efficiency</b>	200 lm/W
<b>LED module / max. watts</b>	100 W
<b>Max. back-up time</b>	Location: Normal Mode / Smart Mode 52 degrees latitude (Amsterdam): 9 days / 13 days 47 degrees latitude (Munich): 7 days / 10 days 40 degrees latitude (Madrid): 3 days / 5 days
<b>Colour temperature</b>	
<b>Optics   Light distribution</b>	4000 K
<b>Life of LED</b>	> 75 000 h (L80)
<b>Protection class</b>	IP67

**OPTICS**

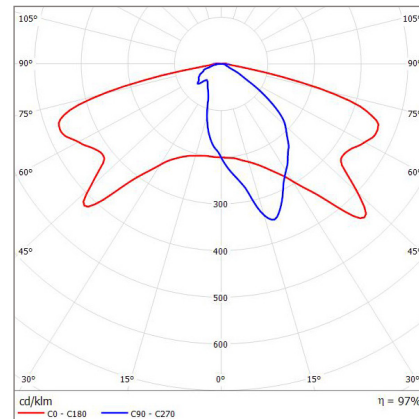
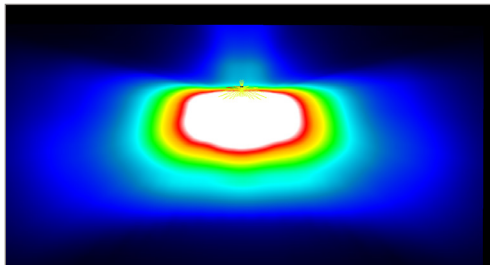
**photinus OPTIC**

Standard optic with optimum compromise between illumination width and illumination depth



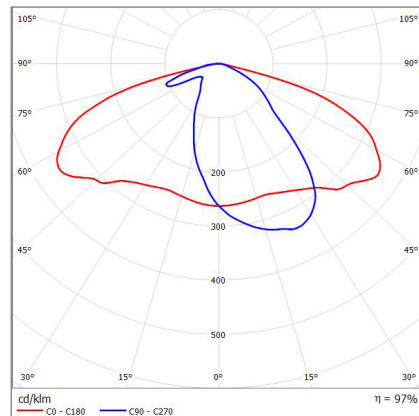
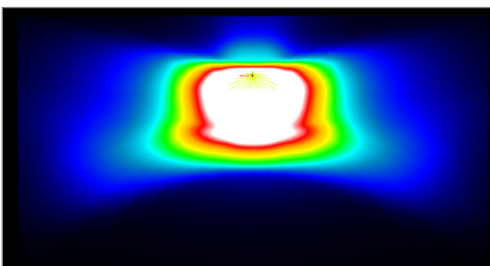
**SCL OPTIC**

optimal for streets with a width from 2m to 4m (cycle paths, walkways and small streets)



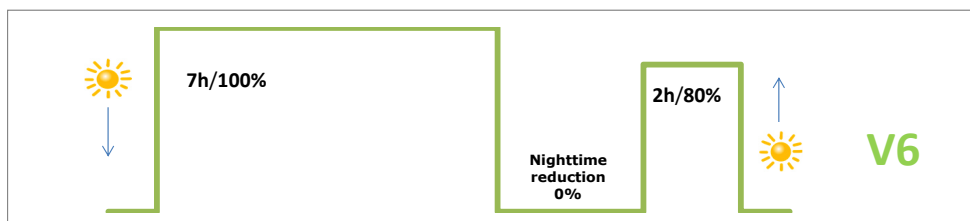
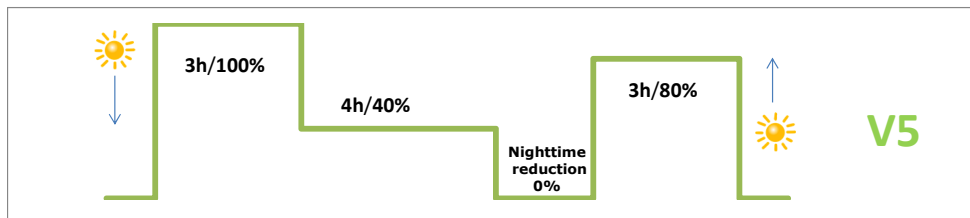
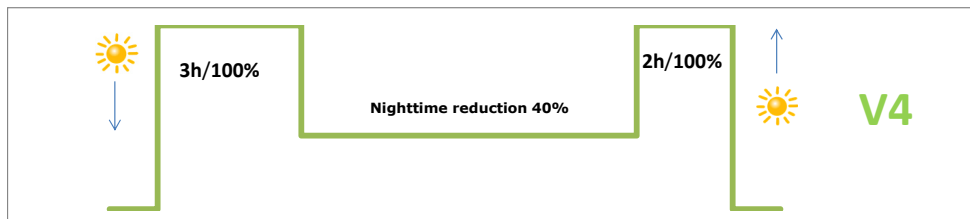
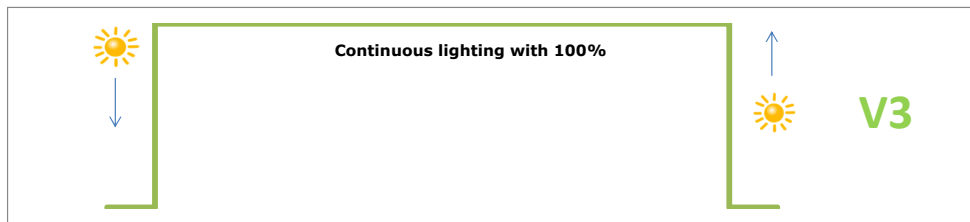
**DWC OPTIC**

optimal for streets with a width from 4m to 7m (Residential roads, secondary roads and main roads, depending on location)



ENERGY AND TIME MANAGEMENT

Standard factory setting V5



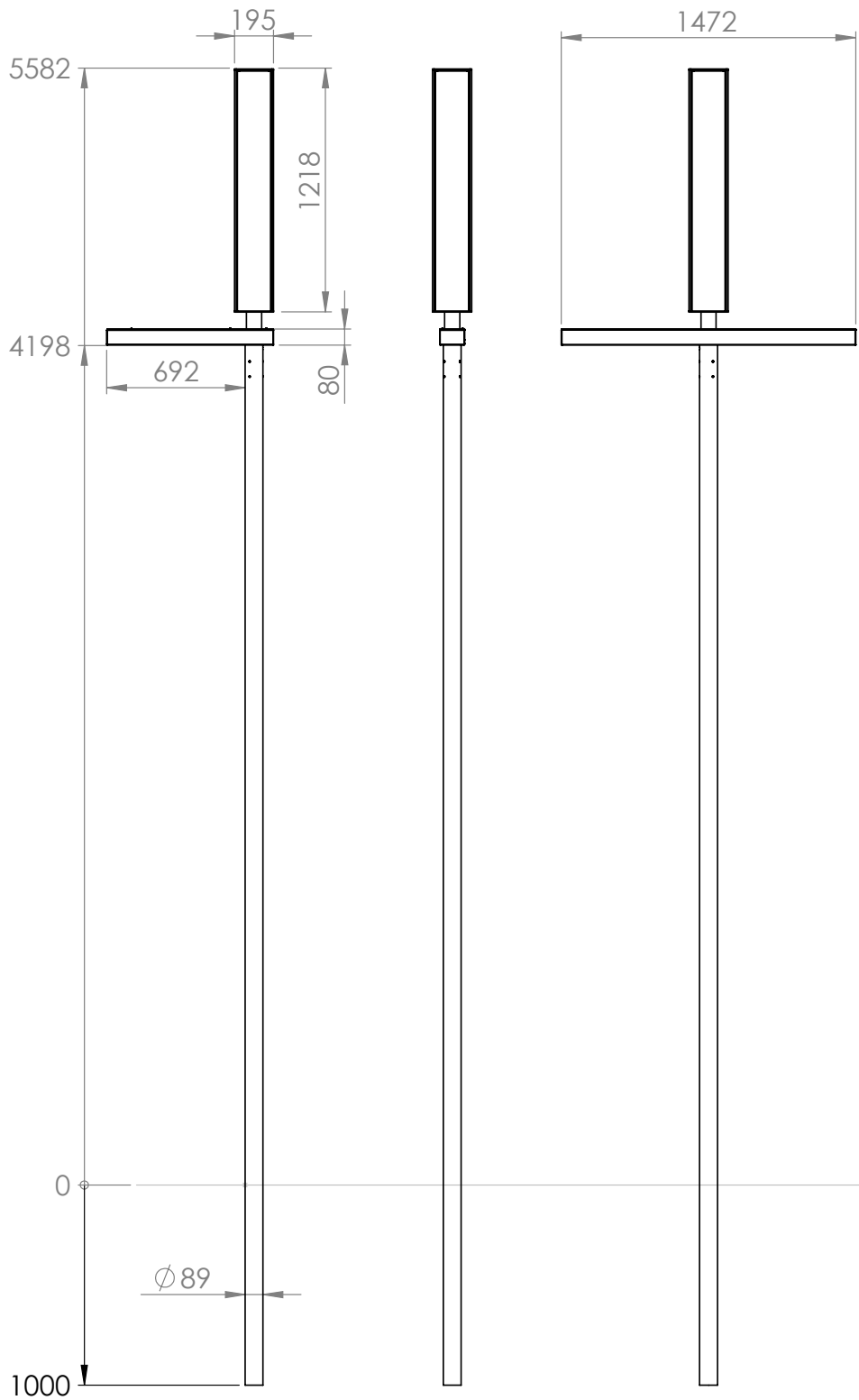
## DIMENSIONS

<b>Total height from ground level</b>	5582 mm
<b>Height of light from ground level</b>	4200 mm
<b>Total length of pole</b>	5200 mm
<b>Weight</b>	35kg
<b>Length of pole in the ground assembled</b>	1000 mm
<b>Light housing</b>	834 mm x 125 mm x 80 mm
<b>Weight</b>	3.2 kg
<b>Solartower</b>	1200 mm x 195 mm x 195 mm
<b>Weight</b>	21 kg
<b>Wind load</b>	Wind load zone 4, with 30m/s (110km/h) (Lloyds CLAME 2016)

## MATERIALS

<b>Pole</b>	galvanised and powder-coated steel „Sparkling iron effect dark“
<b>Metal parts</b>	powder-coated aluminium „Sparkling iron effect dark“
	(technical changes reserved)

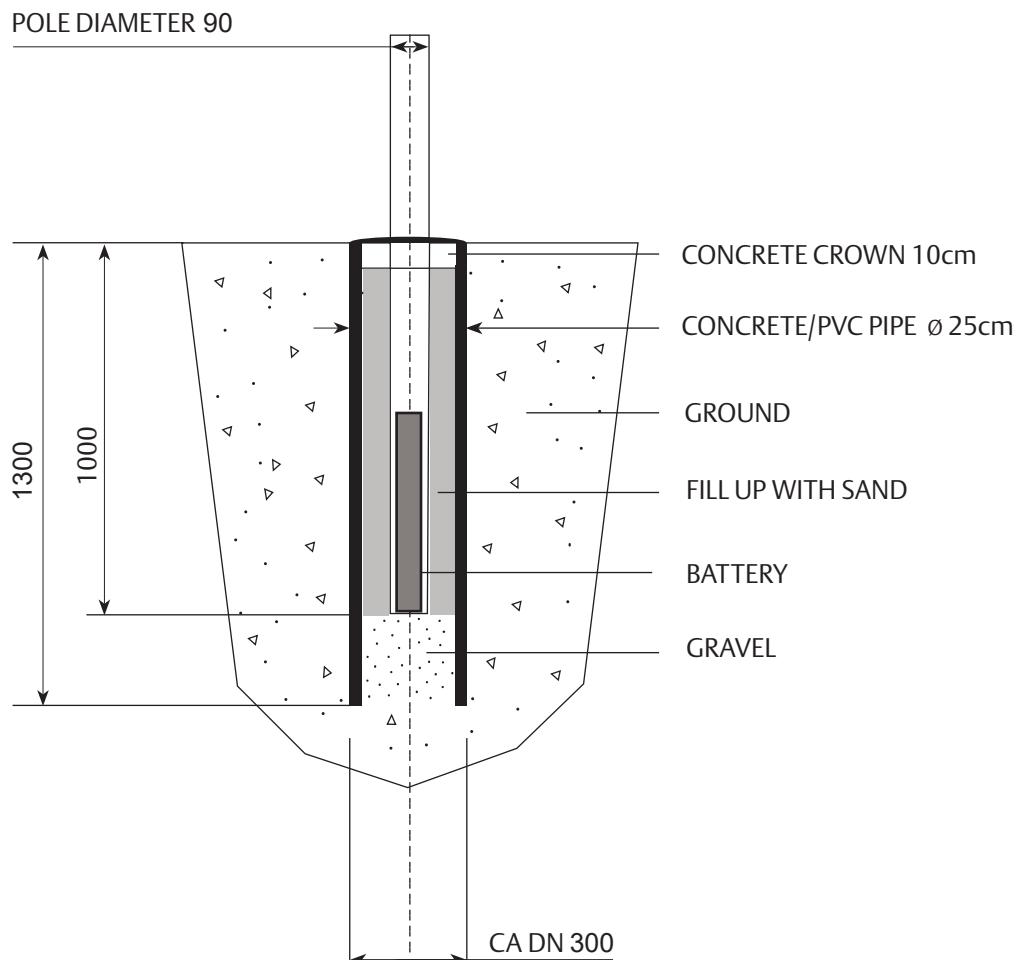
**DIMENSIONS**



# 3

## OPTIONS FOR ASSEMBLY

### OPTION 1 - PIPE FOUNDATION





**OPTION 2 - GROUND SCREW**

**KRINNER GROUND SCREW**

Art. 25500: KSF E140x2100-E76-100

Art. 26813: Eccentric disk set - E90

