

brilliance in solar lighting

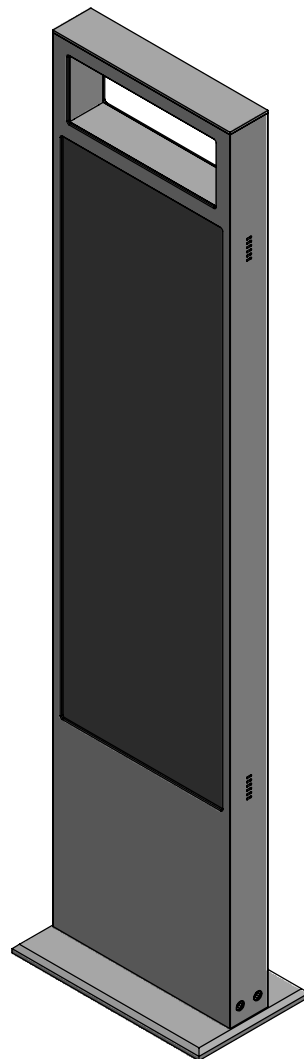
photinus



GERMAN
DESIGN
AWARD
SPECIAL
2019

DATASHEET V1 | 2019

juno PLUS



1

juno PLUS

SELF-SUFFICIENT SOLAR LED LIGHT FOR SIDEWALKS, DRIVEWAYS, PARKS AND MORE

USE

Photinus has developed an innovative technology with its vertical facing solar module, which has opened new dimensions in both design and functionality. This unique construction guarantees unrestricted energy intake and cannot be blocked by snow or foliage.

Furthermore, in poor light conditions, 100% of the light reflection will be absorbed, which is a significant advantage to traditional solar lights. With the elegant design there are no limits to the possibilities for this luminaire.

The juno solar light is ideal lighting for sidewalks, driveways, pedestrian paths, parks, private garden facilities, promenades, boardwalks and any location where there is no access to electrical power.

FUNCTION

The integrated battery is charged by the photinus high performance photovoltaic module and at dusk conditions this energy is used to efficiently operate the LED.

GUARANTEE

3 years

The warranty of the solar illumination is provided, as far as the illumination is installed like described in the installation instructions. The warranty is void, if the product settings haven't been changed by photinus authorized employees/partners and/or using non-photinus approved tools.

2

TECHNICAL DATA

SOLARMODULE AND BATTERY

Solar module	monocrystalline silicon cells with exceptional efficiency specially processed by photinus
Efficiency	20%
Max. performance of the energy column Pmpp	2 x 27 Wp / 2 solar modules – modules are also charged up in cloudy conditions.

BATTERY

Battery	NiMh / 108 Wh (12V 13Ah)
Operating temperature	Charge and discharge temperature - 45°C to + 85°C
Battery life	5 to 7 years

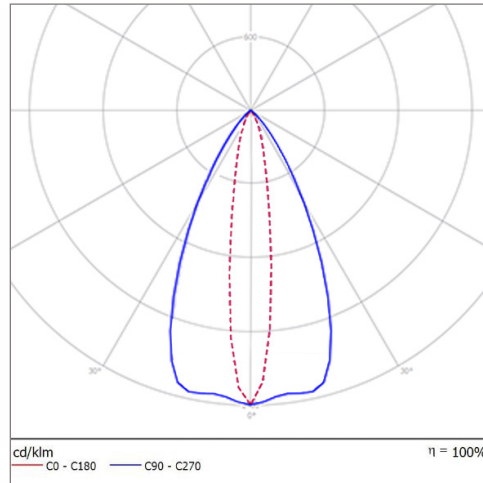
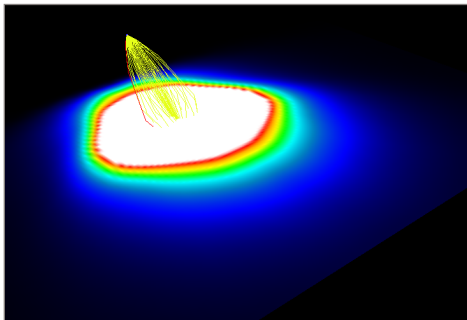
LIGHTS

Max. luminous flux	1000 lm (Bregenz site, 47 degrees latitude: 600 lm)
Max. Efficiency	185 lm/W
LED module / max. watts	15 W
Max. back-up time	Location: Normal Mode /Smart Mode 52 degrees latitude (Amsterdam): 9 days / 13 days 47 degrees latitude (Munich): 7 days / 10 days 40 degrees latitude (Madrid): 3 days / 5 days
Colour temperature	3000 K (standard)
Optics Light distribution	situational
Life of LED	> 75 000 h (L80)
Protection class	IP65

OPTIC

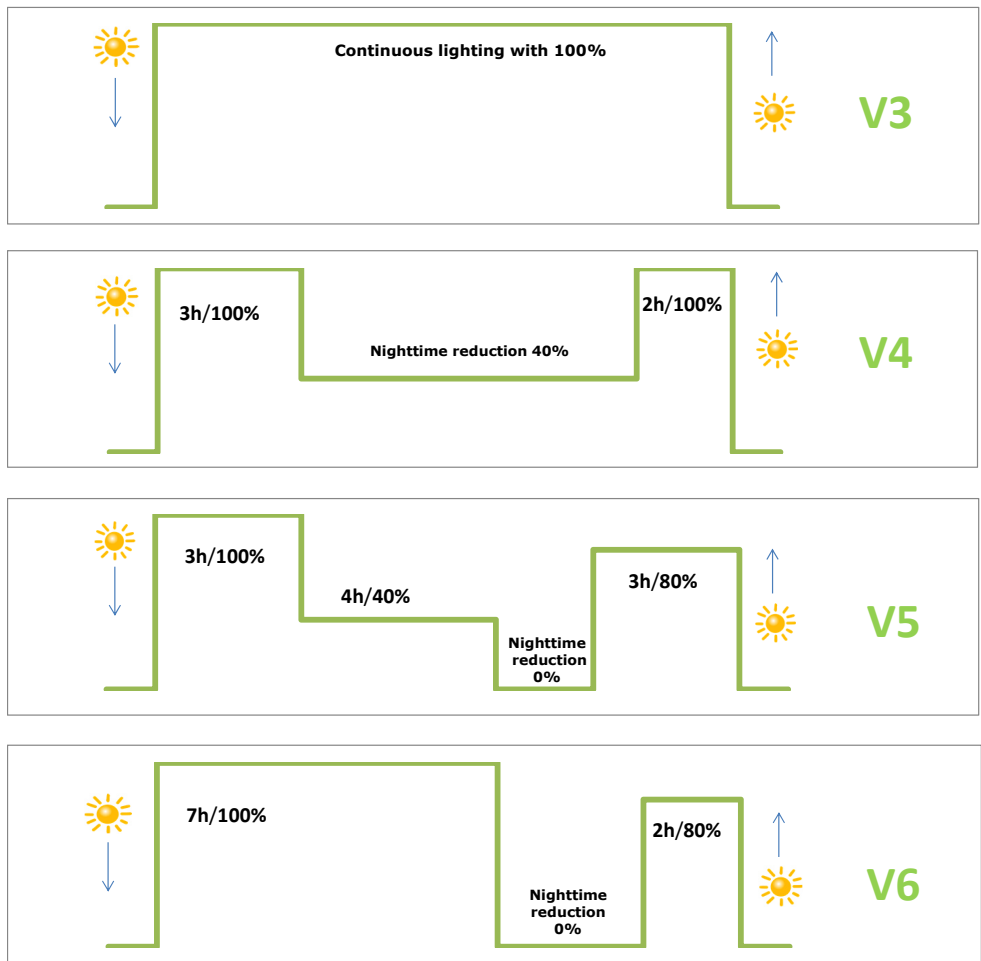
juno OPTIC

perfect for walkways, pathways,
driveways, courtyards and garden faci-
ties



ENERGY AND TIME MANAGEMENT

Standard factory setting V5

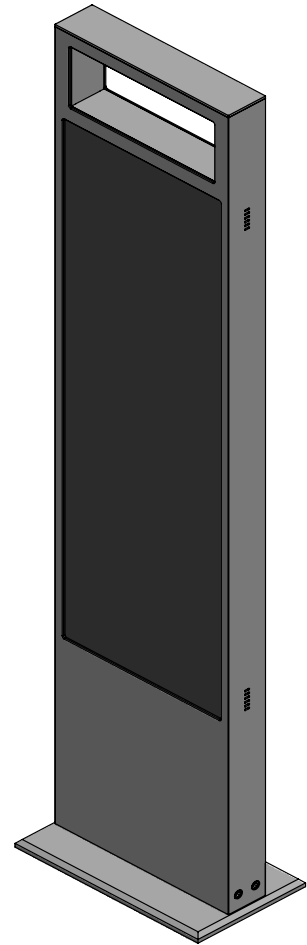
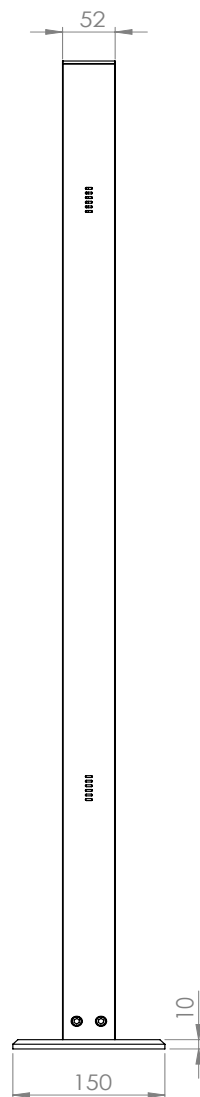
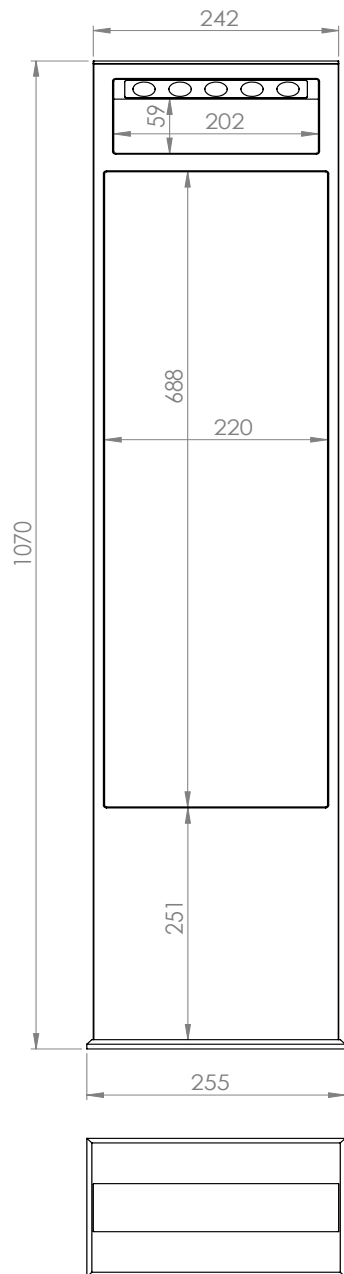


DIMENSIONS

Total height from ground level	1060 mm (without base plate)
Height of light from ground level	1000 mm
Width of the solar light	255 mm
Strength of the solar light	52 mm
Base plate	255mm x 150mm x 10mm
Material of solar light	galvanised and powder-coated steel „Sparkling iron effect dark“
Weight of solar light	17,5 kg

(technical changes reserved)

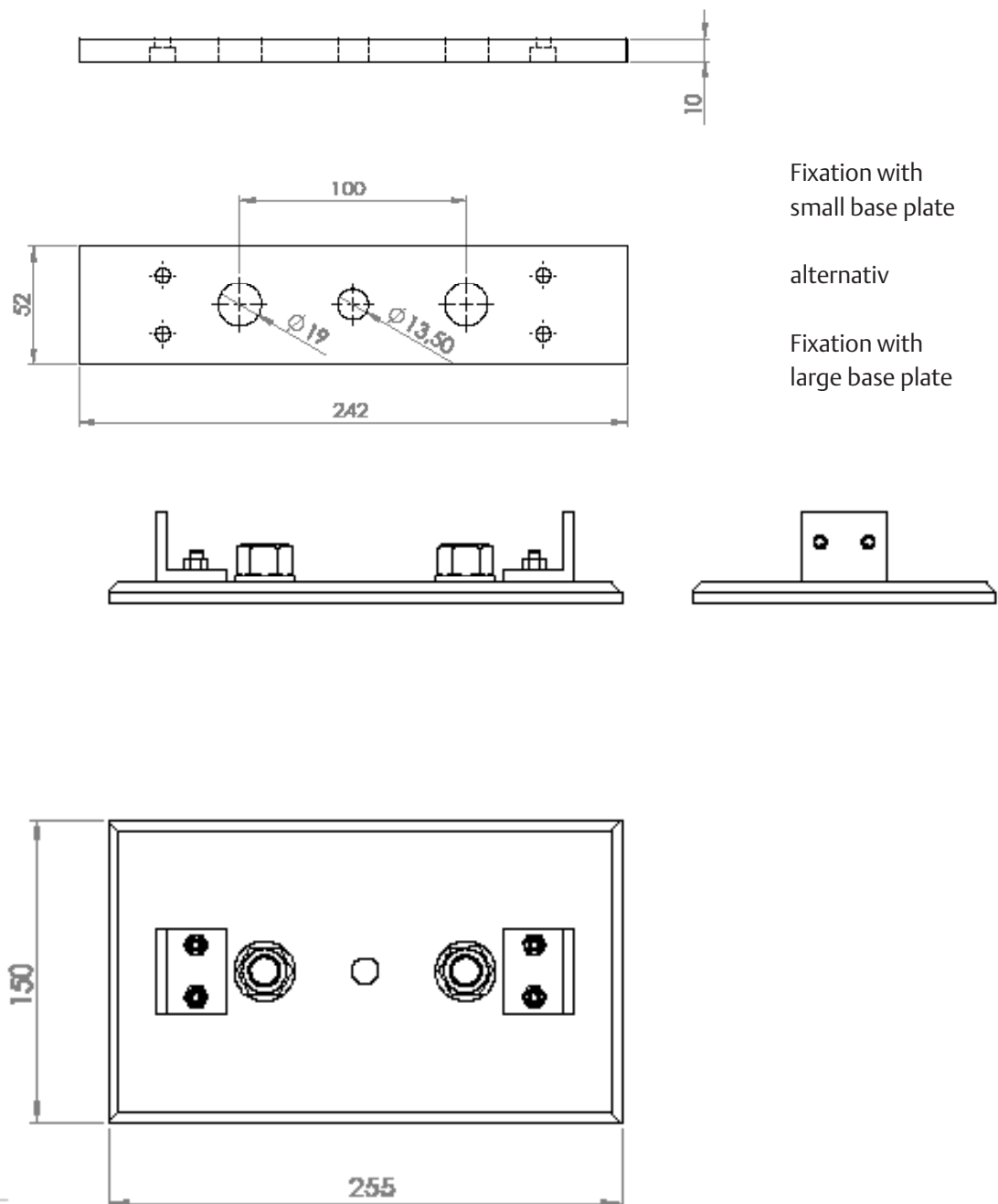
DIMENSIONS



3

OPTIONS FOR ASSEMBLY

OPTION 1 - CONCRETE FOUNDATION

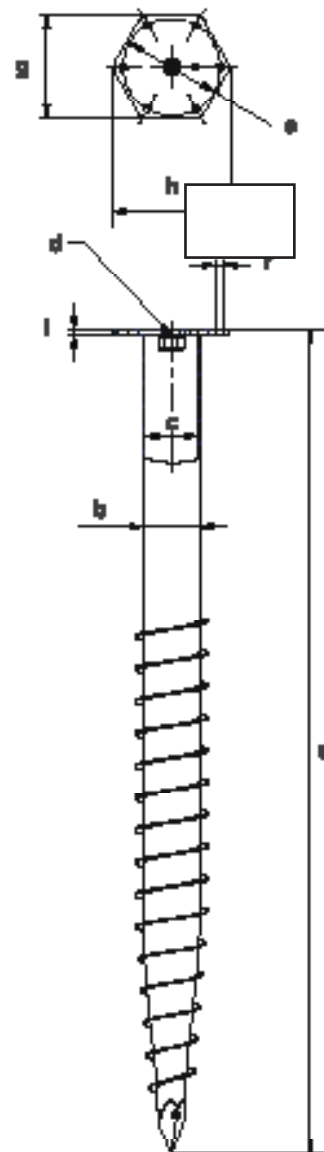


OPTION 2 - GROUND SCREW

The fixing of the juno solar light with a Krinner ground screw is only possible with the baseplate (255 mm x 150 mm x 10 mm)!

**KRINNER Ground Screw
 KSF M 76 x 800-M12**

a Length (+/- 25mm)	815 mm
b Shaft outer diameter	76,10 mm
c Inner diameter	70,90 mm
d Thread	M12
e Pitch circle diameter	116 mm
g Flange wrench size	120 mm
h Flange outer diameter	136 mm
i Flange thickness	5 mm



OPTION 3 - MOUNTING WEDGE

