

brilliance in solar lighting

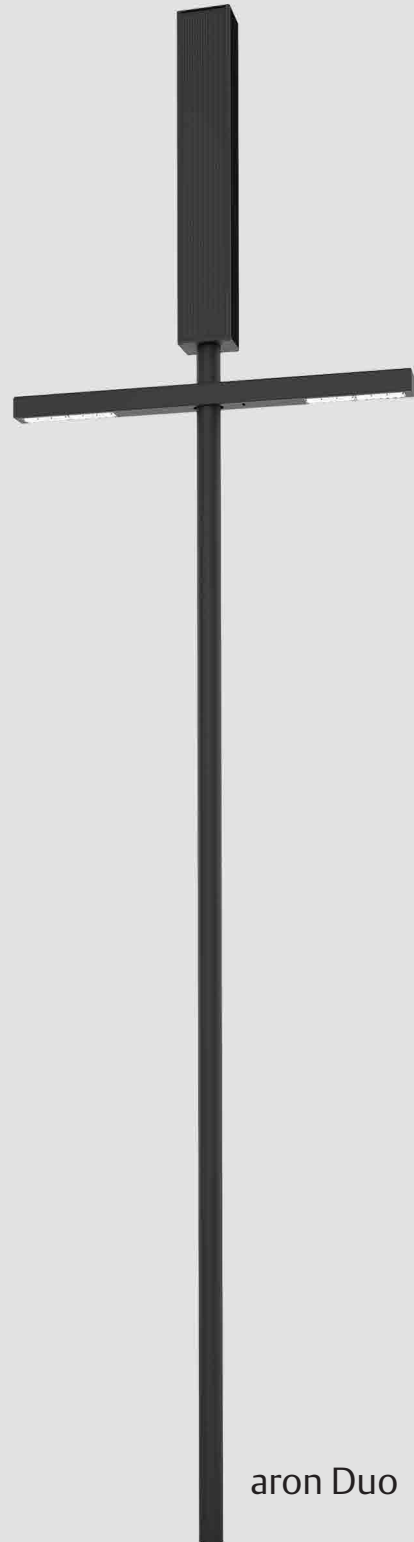
photinus

Datasheet

aron / aron Duo



aron



aron Duo

SELF-SUFFICIENT SOLAR LED STREET LAMP

USE

The aron is available to ensure a secure supply even in critical weather regions. The aron solar light is a solar-powered LED street lamp for car parks with two light sources which are used where there is no electricity supply or where it would not be economically feasible to implement one. The aron can be used anywhere where a secure supply and excellent light quality is of paramount importance even in dim conditions. Due to the cubic aluminium construction with 4 photinus high performance photovoltaic modules, sufficient energy can be generated in a targeted manner via the diffuse light component especially in regions with poor weather (snow, fog, etc.). The vertically arranged modules prevent snow from accumulating on it in winter. A sophisticated energy management system guarantees secure functionality over several nights even in poor weather conditions.

FUNCTION

The integrated battery is charged during daytime by the efficient photovoltaic solar module. At nightfall, the LED light module is automatically activated.

The light output of a solar lamp is defined by the incident solar irradiation at the respective location, which is why the quality of the individual components and their optimum interaction play a decisive role.

The LiFeP04 battery used in his solar light is shored in the ground together with the post so that an optimum, constant temperature is achieved. The long service life of the battery and efficient theft protection are the results.

GUARANTEE

5 years

The warranty of the solar illumination is provided, as far as the illumination is installed like described in the installation instruction. The warranty is void, if the product settings haven't been changed by photinus authorized employees/partners and/or using non photinus approved tools.

SOLAR LIGHT		aron / aron Duo
SOLAR MODULES		
Solar modules	Monocrystalline silicon cells with exceptional efficiency specially processed by photinus	
Efficiency	20%	
Max. performance of the energy column Pmpp	150 Wp / 4 solar modules, they are also charged up in cloudy conditions.	
BATTERY (IN THE POLE)		
Battery	LiFeP04 / 474 Wh (12,8 V 37Ah)	
Operating temperature	-20°C to +60°C	
Battery life	up to 10 years	
Protection class	IPX8	
LIGHTS		
Max. luminous flux	Depending on the location where the light is staying. Location: Luminous flux / autonomy time / normal mode / smart mode 52. degrees lat. (Amsterdam): 5 W, 1000 lm / V5 / 8 days / 12 days 47. degrees lat. (Munich): 9 W, 1400 lm / V5 / 6 days / 9 days 40. degrees lat. (Madrid): 22 W, 3790 lm / V5 / 3 days / 5 days	
Efficiency	200lm/W at 600mAh	
LED module / max. watts	100 W	
Colour temperature	4000K (By request changeable: Amber Light, 2000K, 3000K, 5000K)	
Life of LED	>75 000 h (L80)	
Protection-class	IP 67	
MATERIALS		
Pole	galvanised and powder-coated steel „Sparkling iron effect dark“	
Metal parts	powder-coated aluminium „Sparkling iron effect dark“	

Technical changes reserved!

DIMENSIONS	
Total height from ground level	5582 mm
Height of light from ground level	4200 mm
Total length of pole	5200 mm
Weight pole	35 kg
Length of the pole in the ground	1000 mm
Material pole	galvanised and powder-coated steel „Sparkling iron effect dark“
Solartower	1218 mm x 195 mm x 195 mm
Weight Solartower	21 kg
Light housing	834 mm x 125 mm x 80 mm
Weight light housing	3,3 kg
Wind load	Wind load zone 4, with 30m/s (110km/h) (Lloyds CLAME 2016)

Salt spray test (ISO 9227:2012)

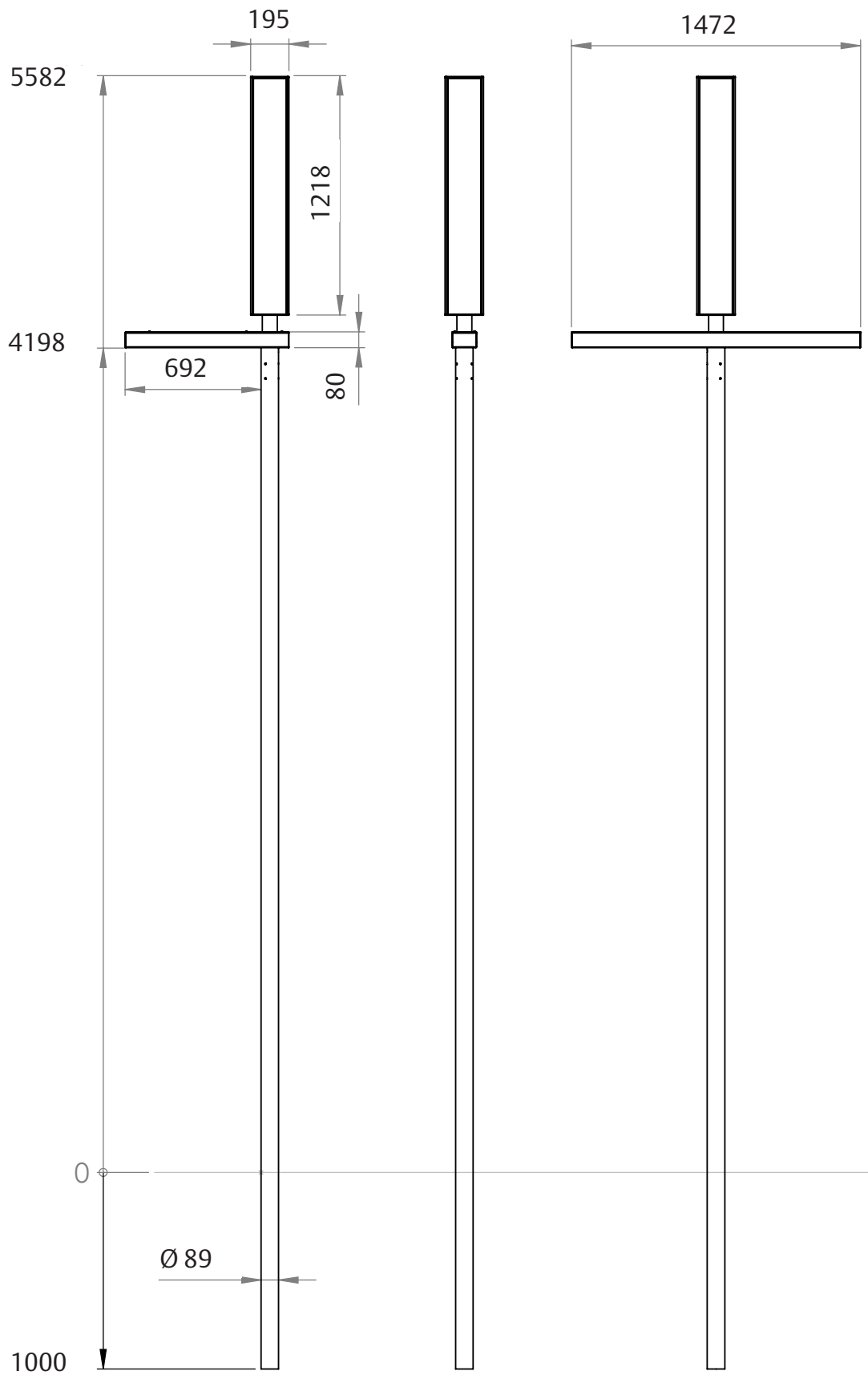
Corrosion test in artificial atmosphere - salt spray test (ISO 9227:2012)

All solar lights have successfully passed the salt spray test.

Details

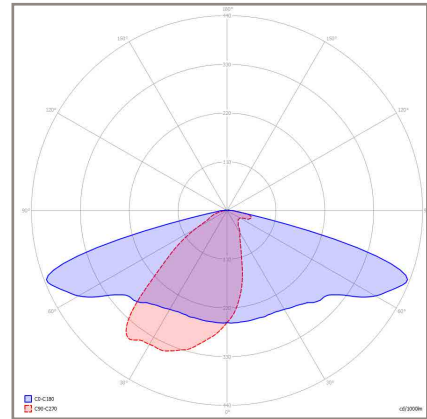
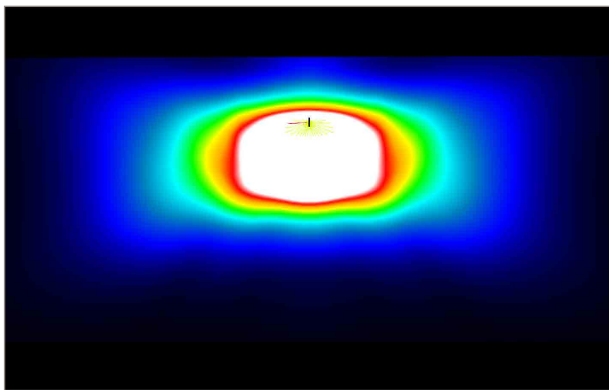


Dimensions



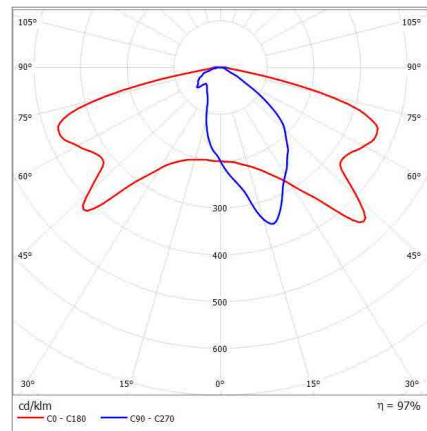
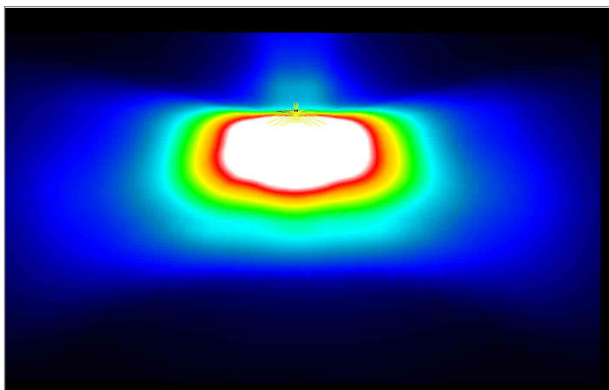
photinus OPTIC

Standard optic with optimum compromise between illumination width and illumination depth



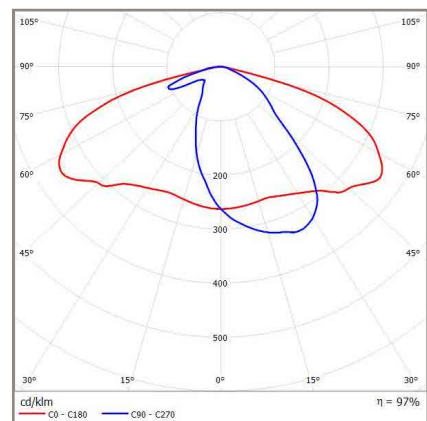
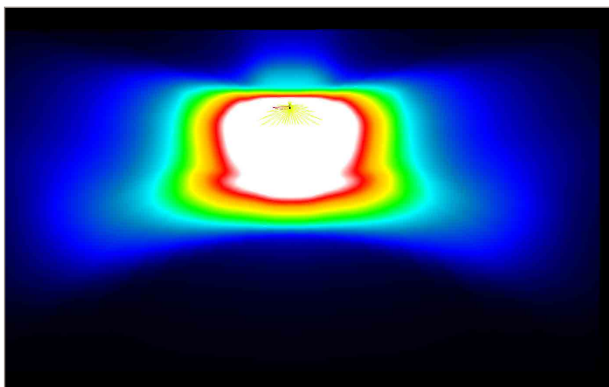
SCL OPTIC

Optimal for streets with a width from 2m to 4m (cicle paths, walkways and small streets)



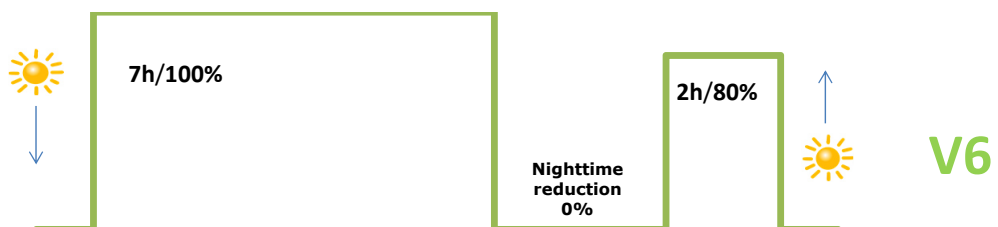
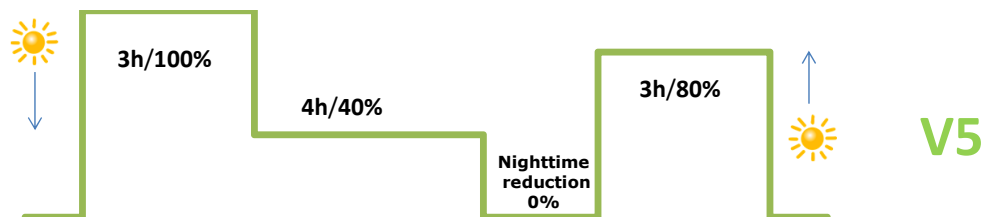
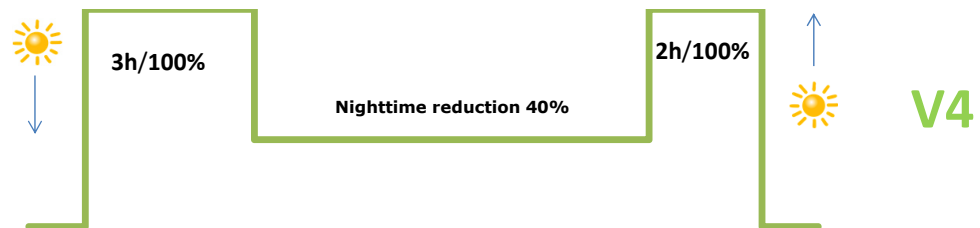
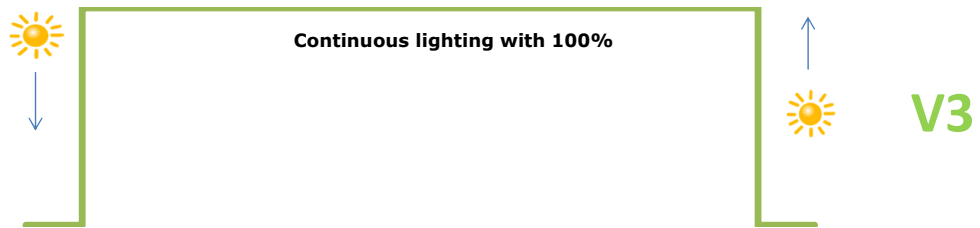
DWC OPTIC

Optimal for streets with a width from 4m to 7m (residential roads, secondary roads and main roads, depending on location)



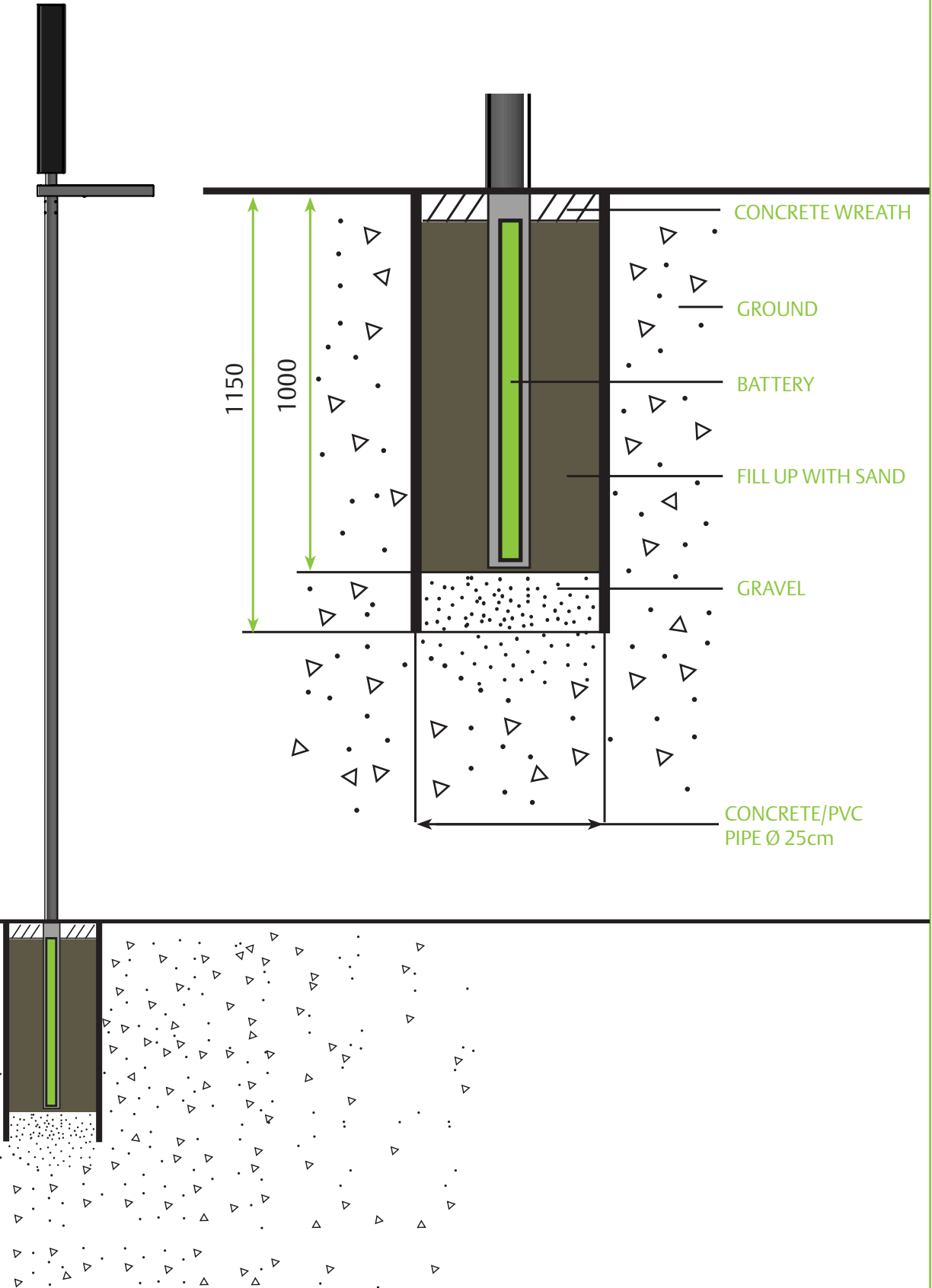
ENERGY AND TIME MANAGEMENT

Standard factory setting V5





OPTION 1 - PIPE FOUNDATION

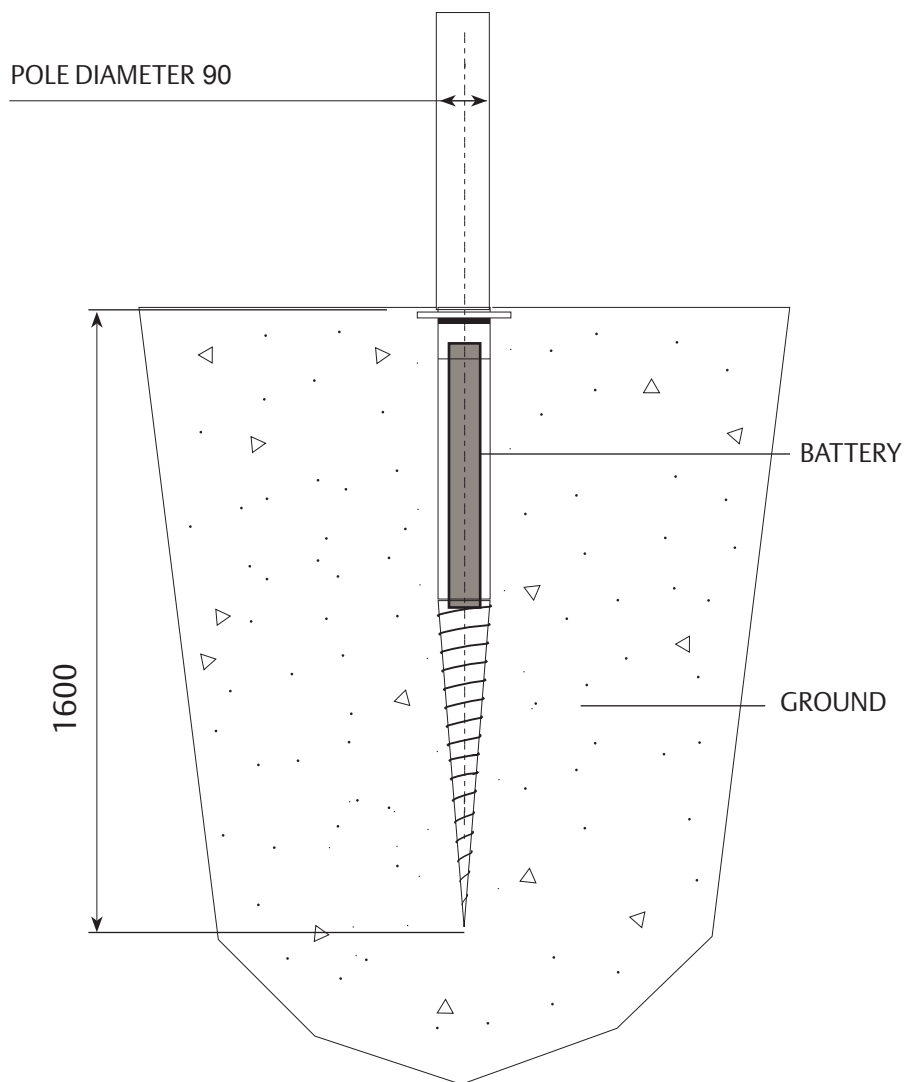


OPTION 2 - GROUND SCREW

KRINNER Ground screw

Art. 25500: KSF E140 x 2100-E76-100

Art. 26813: Eccentric disk set - E90



References

aron
Bus stop / AT



aron
Ronneburg / DE

aron
Sport parc/ DE



References



aron
Car dealership Ries / DE

aron
Larnaka / CYP



aron
Gersthofen / DE